



**LILY® SUGAR'N CREAM®
LOVE HANDLE HOT PAD (TO CROCHET)**

MEASUREMENTS

Approx 6½" [16.5 cm] wide x 5½" [14 cm] high.

MATERIALS

Lily® Sugar'n Cream® (70.9 g/2.5 oz; 109 m/120 yds)

Version I

Main Color (MC) Red (00095) **1 ball or 65 m/72 yds**

Contrast A Ecru (00004) **1 ball or 10 m/11 yds**

Version II

Main Color (MC) Rose Pink (00046) **1 ball or 65 m/72 yds**

Contrast A Ecru (00004) **1 ball or 10 m/11 yds**

Size 5 mm (U.S. H/8) crochet hook **or size needed to obtain gauge.**

GAUGE

12 sc and 13 rows = 4" [10 cm] with 2 strands of yarn held tog.

ABBREVIATIONS: www.sugarncream.com/abbreviations

Approx =

Approximately

Ch = Chain(s)

Rem = Remaining

Rnd(s) = Round(s)

Sc = Single crochet

Sl st = Slip stitch

Sp(s) = Space(s)

Tog = Together

WS = Wrong side

INSTRUCTIONS

HEART (make 2)

With 2 strands of MC tog, ch 17.

1st rnd: 2 sc in 2nd ch from hook. 1 sc in each of next 6 ch. Miss next 2 ch. 1 sc in each of next 6 ch. 3 sc in last ch. *Working in rem loops of foundation ch*, 1 sc in each of next 7 ch. Ch 2. 1 sc in each of next 8 ch. Join with sl st to first sc. 32 sc.

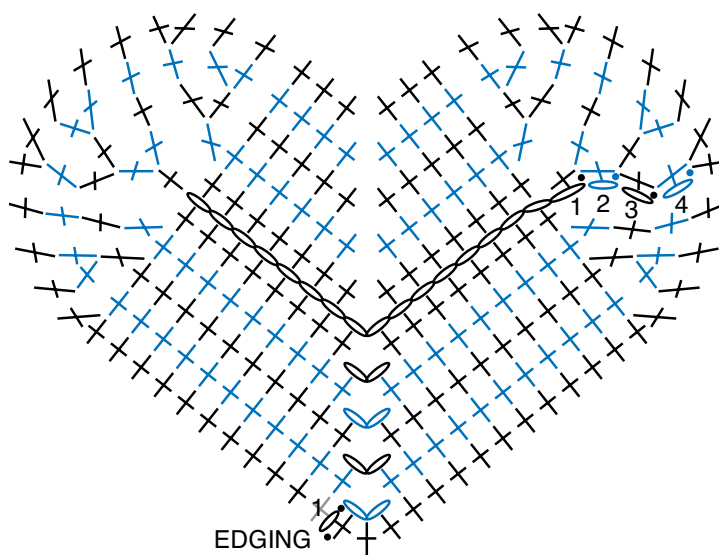
2nd rnd: Ch 1. 2 sc in each of next 2 sc. 1 sc in each of next 5 sc. Miss next 2 sc. 1 sc in each of next 5 sc. 2 sc in each of next 3 sc. 1 sc in each of next 7 sc. (1 sc. Ch 2. 1 sc) in next ch-2 sp. 1 sc in each of next 7 sc. 2 sc in last sc. Join with sl st to first sc. 38 sc.

3rd rnd: Ch 1. (2 sc in next sc. 1 sc in next sc) twice. 1 sc in each of next 4 sc. Miss next 2 sc. 1 sc in each of next 5 sc. (2 sc in next sc. 1 sc in next sc) 3 times. 1 sc in each of next 7 sc. (1 sc. Ch 2. 1 sc) in next ch-2 sp. 1 sc in each of next 8 sc. 2 sc in next sc. 1 sc in last sc. Join with sl st to first sc. 44 sc.

4th rnd: Ch 1. 1 sc in first sc. 2 sc in next sc. 1 sc in each of next 2 sc. 2 sc in next sc. 1 sc in each of next 4 sc. Miss next 2 sc. 1 sc in each of next 4 sc. (2 sc in next sc. 1 sc in each of next 2 sc) twice. 2 sc in next sc. 1 sc in each of next 10 sc. (1 sc. Ch 2. 1 sc) in next ch-2 sp. 1 sc in each of next 10 sc. 2 sc in next sc. 1 sc in last sc. Join with sl st to first sc. Fasten off.

Edging: With WS tog, working through all thicknesses and with 2 strands tog, join A with sl st to ch-2 sp.

1st rnd: Ch 1. 3 sc in same sp as last sl st. 1 sc in each of next 10 sc. (2 sc in next sc. 1 sc in each of next 3 sc) 3 times. 1 sc in each of next 2 sc. Miss next 2 sc. 1 sc in each of next 5 sc. (2 sc in next sc. 1 sc in each of next 3 sc) 3 times. 1 sc in each of next 7 sc. Join with sl st to first sc. Fasten off.



STITCH KEY

○ = chain (ch)

• = slip st (sl st)

⊕ = single crochet (sc)



P.O. Box 40 Listowel ON N4W 3H3